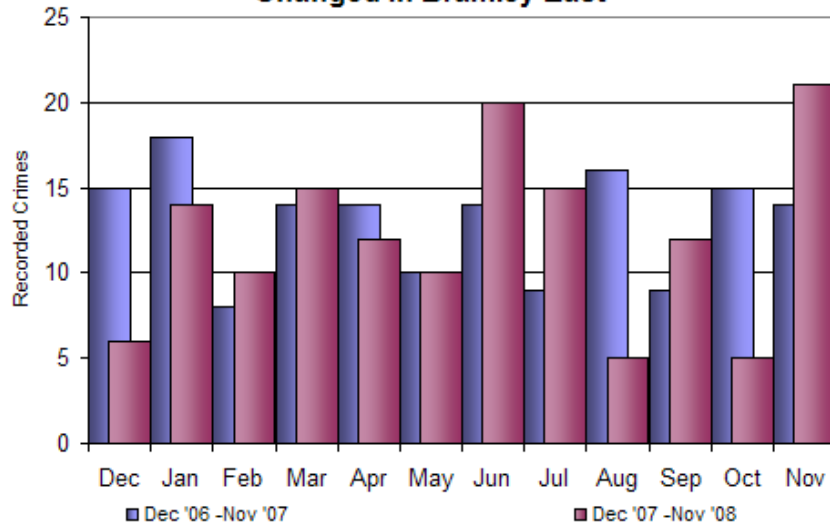


Crime Data for Wythers Estate Nov 2008
(All data from www.Beatcrime.info)

| | | Over The Last 12 Months | | | | |
|-----------------------------------|---------------------|-------------------------|---------------------------|------------------|------------------|-------------------|
| Bramley East | Nov-08 In This Area | Total For This Area | For Every 1000 Households | | | |
| | | | In The Area | In This Division | In This District | In West Yorkshire |
| Burglary Dwelling | 21 | 145 | 32.8 | 30.2 | 28.4 | 23.1 |

Burglary dwelling for the area is comparable to the division but Higher than the district average and significantly higher than the West Yorkshire average.

How Have Burglary Dwelling Crime Levels Changed In Bramley East

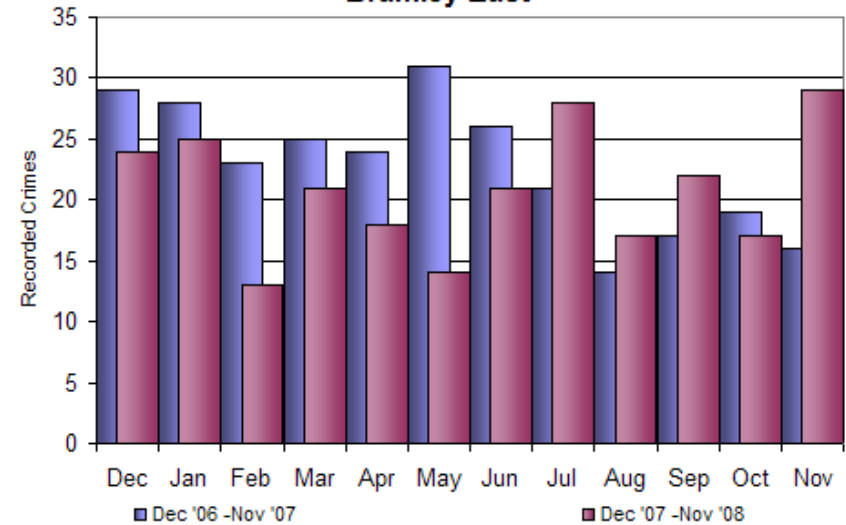


This chart shows the variation in monthly Burglary dwelling figures for the last 24 months

| | | Over The Last 12 Months | | | | |
|-------------------------------|---------------------|-------------------------|---------------------------|------------------|------------------|-------------------|
| Bramley East | Nov-08 In This Area | Total For This Area | For Every 1000 Population | | | |
| | | | In The Area | In This Division | In This District | In West Yorkshire |
| Vehicle Crime | 29 | 249 | 22.5 | 13.1 | 14.9 | 13.9 |

Vehicle crime in the area is significantly higher compared to the divisional and west Yorkshire averages.

How Have Vehicle Crime Levels Changed In Bramley East

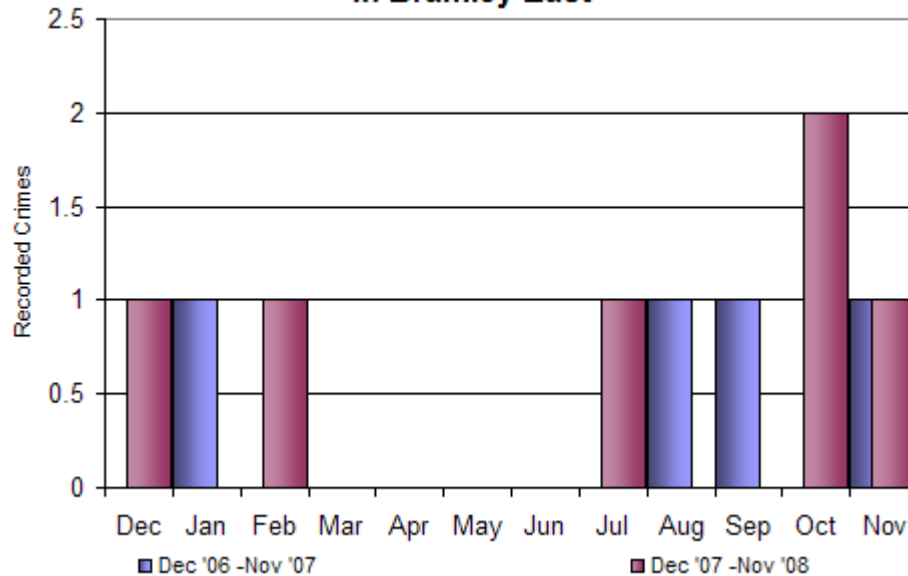


This chart shows the variation in monthly vehicle crime figures for the last 24 months

| | | Over The Last 12 Months | | | | |
|---------------------------------------|---------------------|-------------------------|---------------------------|------------------|------------------|-------------------|
| Bramley East | Nov-08 In This Area | Total For This Area | For Every 1000 Population | | | |
| | | | In The Area | In This Division | In This District | In West Yorkshire |
| Serious Violent Crime | 1 | 6 | 0.5 | 0.2 | 0.3 | 0.2 |

Serious violent crime for the area is high but due to the low numbers of incidents the averages do not allow for comparison.

How Have Serious Violent Crime Levels Changed In Bramley East

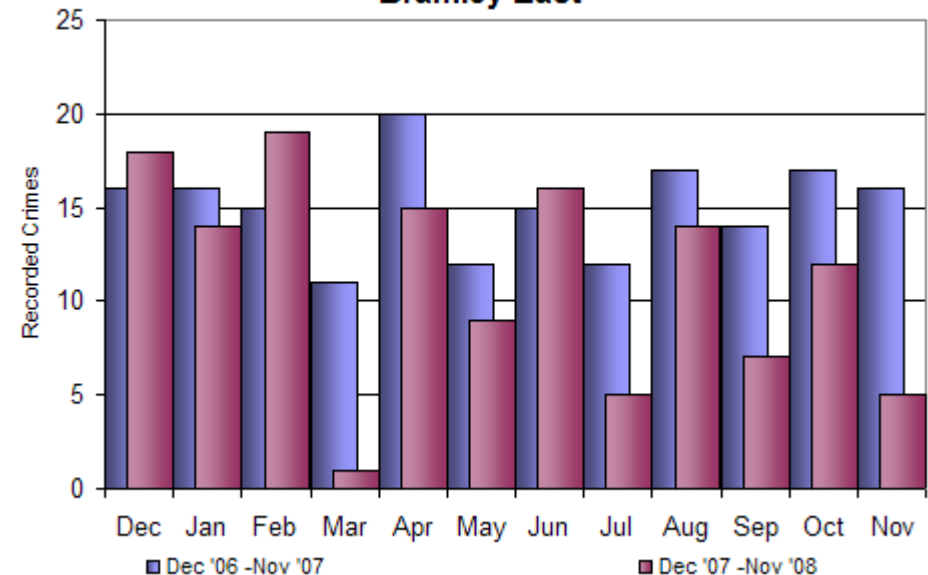


This chart shows the variation in monthly serious violent crime figures for the last 24 months

| | | Over The Last 12 Months | | | | |
|-------------------------------|---------------------|-------------------------|---------------------------|------------------|------------------|-------------------|
| Bramley East | Nov-08 In This Area | Total For This Area | For Every 1000 Population | | | |
| | | | In The Area | In This Division | In This District | In West Yorkshire |
| Violent Crime | 5 | 135 | 12.2 | 7.1 | 9.7 | 8.8 |

Violent crime for the area is high compared to the division, district average and the West Yorkshire average.

How Have Violent Crime Levels Changed In Bramley East



This chart shows the variation in monthly violent crime figures for the last 24 months

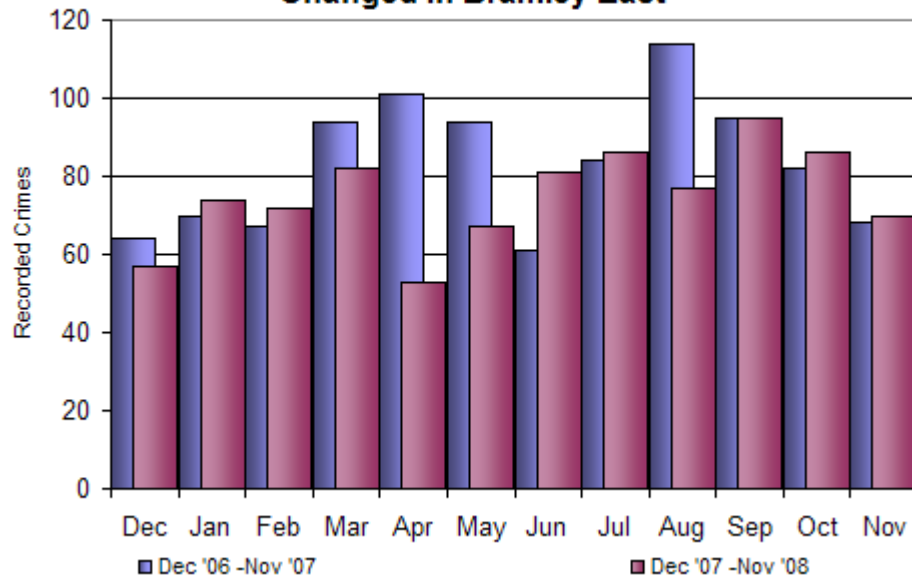
| Bramley East | Nov-08 In This Area | Total For This Area | For Every 1000 Population | | | |
|---------------------------------------|---------------------|---------------------|---------------------------|------------------|------------------|-------------------|
| | | | In The Area | In This Division | In This District | In West Yorkshire |
| Anti-Social Behaviour | 70 | 891 | 80.6 | 46.3 | 58.2 | 60.5 |

Anti-social behaviour for the area is high compared to the division, district average and the West Yorkshire average.

| Bramley East | Nov-08 In This Area | Total For This Area | For Every 1000 Population | | | |
|---------------------------------|---------------------|---------------------|---------------------------|------------------|------------------|-------------------|
| | | | In The Area | In This Division | In This District | In West Yorkshire |
| Criminal Damage | 60 | 527 | 47.7 | 21.3 | 24.2 | 23.2 |

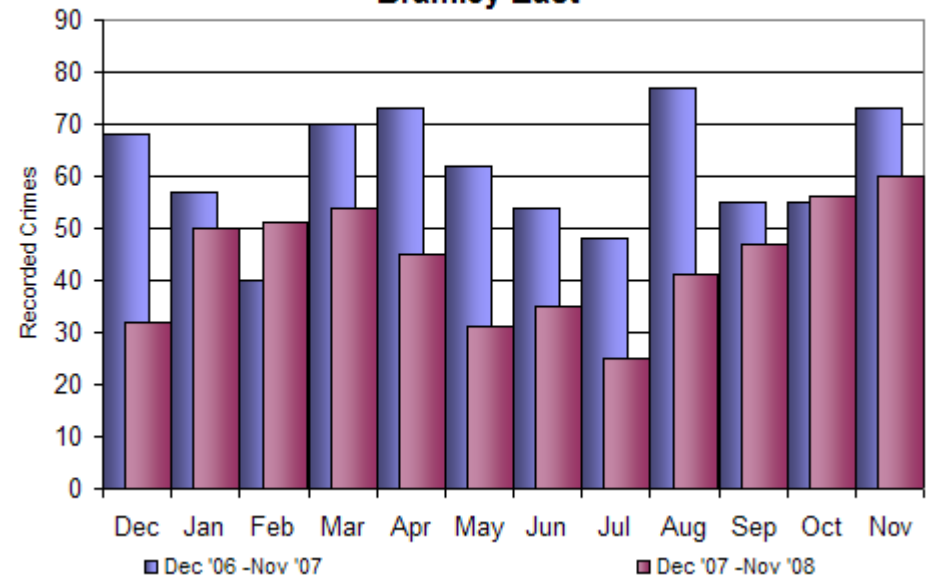
Criminal damage for the area is high compared to the division, district average and the West Yorkshire average.

How Have Anti-Social Behaviour Incidents Changed In Bramley East



This chart shows the variation in monthly anti-social behaviour figures for the last 24 months

How Have Criminal Damage Levels Changed In Bramley East



This chart shows the variation in monthly criminal damage figures for the last 24 months